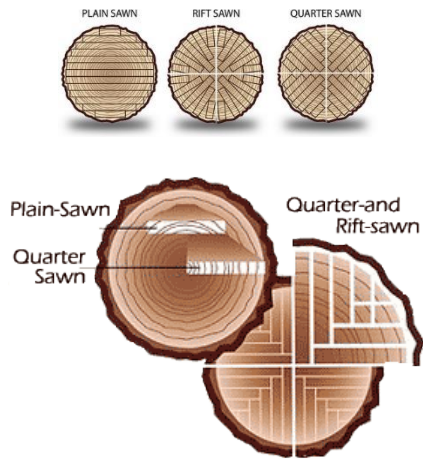


## Types of Cuts



The angle at which a board is cut determines how the finished product looks. Wood flooring is either plainsawn, quartersawn or riftsawn.

**Plainsawn** is the most common cut. Characteristics are its pleasing appearance, and varied grain appearance. It is easier to produce from the log.

**Quartersawn** is more expensive than plainsawn. Characteristics are greater wear resistance, less tendency to cup and twist, less shrinkage in width, and uniform grain appearance with ray flecks. Ray flecks appear in flooring that cuts across the wood's ray cells, which creates a shimmering flake figure spread over the wood.

**Riftsawn** is more expensive than plainsawn. It's similar to quartersawn without the ray flecks.

